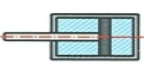
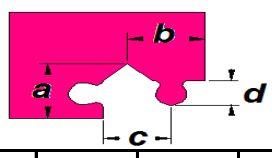
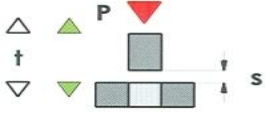
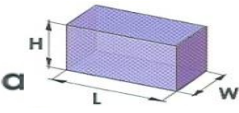

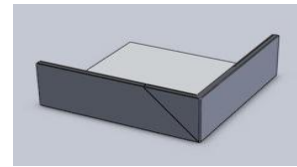
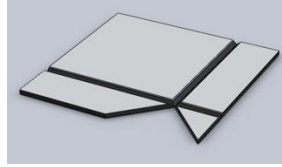
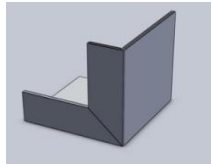
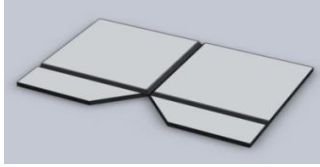
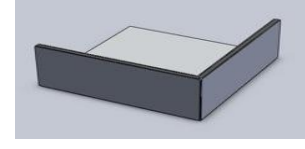
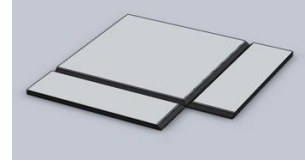

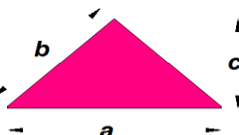
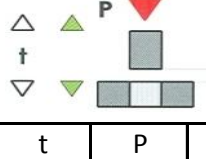
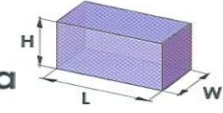

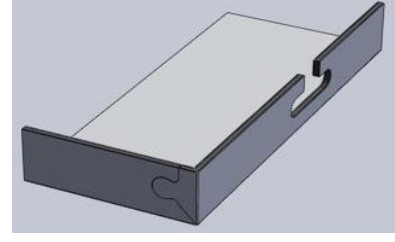
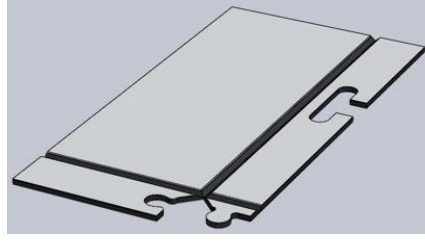



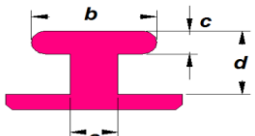
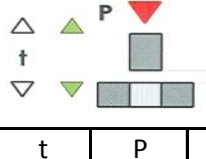
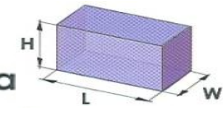

- * Kompozit Panel levhada çeşitli formlarda köşe ve ara boşaltması işlemlerini yapar.
- * Kesilecek panel Dayamalara yaslandırılır.
- * 5 µm filtre edilmiş ,nemden arındırılmış ve yağlanmış hava ile çalışmalıdır.
- * Pres gövdesine standart monte edilmiş 6mm pnömatik hava hortumu ile bağlanır.
- * Pres isteğe bağlı olarak metal yükseltici ile 8mm pnömatik hava hortumu ile bağlanır.
- * Silindir yapısı korozyona ve sürtünmeye karşı direnç gösterecek şekilde tasarlanmıştır.

												
bar	lt/dak	a	b	c	d	t	P	S max	L	W	H	kg
6-8	68	25	25	22	11,2	2	1150 1450	4	280	120	250	4,8



											
bar	lt/dak	a	b	c	t	P	S max	L	W	H	kg
6-8	68	50	70	35	2	1150 1450	4	280	110	230	4



												
bar	lt/dak	a	b	c	d	t	P	S max	L	W	H	kg
6-8	68	15	39	9	25	2	1150 1450	4	280	90	230	3,8

- * Farklı yapısı ve özel çelikten imal edilen kalıplar yüksek adetlerde kullanım sağlar
- * Özel siparişlerde Farklı formlarda işlem kalıplarında yapılır.
- * Uzun süre kullanım sonunda işlevini yitiren kalıplar yedek parça olarak temin edilebilir.