

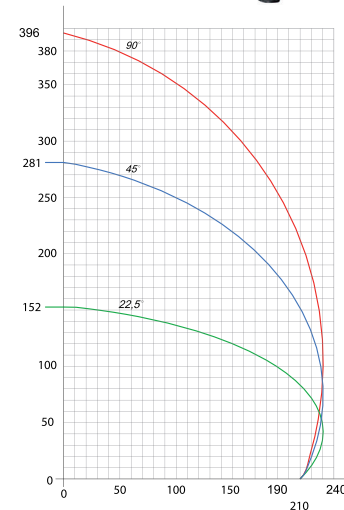
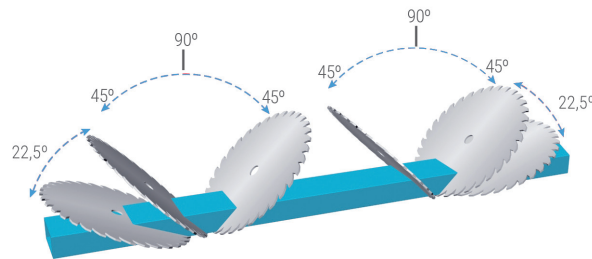
ALU PVC WD

GEMINI SERIES

SÉRIE GEMINI / LA SERIE GEMINI / A SÈRIE GEMINI / СЕРИЯ GEMINI / GEMINI سلسلة



GEMINI - VI



Motor		Blade		Profile		Cutting		Air		Dimensions						
F	M	F	M	R	Ø D	Ø d	s	n	x	Air Pressure	Air Consumption	l x w x h (mm)				
HP	HP	n	3 ~ Hz	I (400 V)	HP	n	3 ~ Hz	I	min	max	bar	L / min	kg			
F 4	M 3	3000	50	15	F 1,7	M 1,26	4000	50	3,15	600	30-32	4,7	3000	6-8	80	8160 x 1910 x 1540
M 3		r.p.m	60	A	M/R 1,26		r.p.m	60	A	410	410	mm	r.p.m			1760
									45°	90°						
									615 mm	5050 mm						
									410 mm	5050 mm						

F: Fixed M: Mobile R: Rack

Double Head Cutting Machine Ø 600 mm

- Automation with 3 Axis Servo Control

EN FEATURES

Used for cutting processes of aluminum, plastic and wooden profiles.

- Hydro-Pneumatic cutting
- Servo controlled rotation axis
- Secure cutting by the cover equipped with a safety sensor
- Automatic positioning at all degrees between -22.5° and +45° with servo motion system
- Industrial PC with Windows based touchscreen and easy to use practical interface
- Remote access
- Data transfer over remote network connection, Ethernet and USB
- Batch processing and precision cutting
- Ability to perform cutting automatically from the list or manually
- Adjustable saw blade travel speed
- Ability to control saw blade travel distance
- Process programming and large memory
- Automatic horizontal and vertical clamps
- Roller conveyor on moving head
- 90° and angular slicing
- Automatic size calculation for mold cutting
- Automatic profile support unit
- Ability to cut profiles longer than 5050 mm up to 8000 mm length with built-in conveyor

Standard Equipment

- Ø 600 mm saw blade (2 pcs)
- Roller conveyor on moving head
- Cooling system

Optional Equipment

- Barcode printer
- Digital adjustment of saw blade travel distance
- Conveyor on fixed head
- Vacuum cleaner for chips
- Automatic waste discharge unit

CUTTING